

SEGA™

A SEGA SATURN EXCLUSIVE



SEGA SATURN

Bulk Lash

THE CHRONICLE OF GUARDIAL



HUDSON

TEEN



AGES 13+

81130

WARNINGS

READ BEFORE USING YOUR SEGA VIDEO GAME SYSTEM

EPILEPSY WARNING

A very small percentage of individuals may experience epileptic seizures when exposed to certain light patterns or flashing lights. Exposure to certain patterns or backgrounds on a television screen or while playing video games may induce an epileptic seizure in these individuals. Certain conditions may induce undetected epileptic symptoms even in persons who have no history of prior seizures or epilepsy. If you, or anyone in your family, has an epileptic condition, consult your physician prior to playing. If you experience any of the following symptoms while playing a video game — dizziness, altered vision, eye or muscle twitches, disorientation, loss of awareness, any involuntary movement or convulsions — IMMEDIATELY discontinue use and consult your physician before resuming play.

PROJECTION TELEVISION WARNING

Still pictures or images may cause permanent picture-tube damage or mark the phosphor of the CRT. Avoid repeated or extended use of video games on large-screen projection televisions.

SEGA SATURN VIDEO GAME USE

This CD-ROM can only be used with the Sega Saturn system. Do not attempt to play this CD-ROM on any other CD player; doing so may damage the headphones and speakers. This game is licensed by Sega for home play on the Sega Saturn system only. Unauthorized copying, reproduction, rental, public performance or broadcast of this game is a violation of applicable laws.

The characters and events portrayed in this game are purely fictional. Any similarity to other persons, living or dead, is purely coincidental.

HANDLING YOUR COMPACT DISC

- ☐ The Sega Saturn compact disc is intended for use exclusively on the Sega Saturn System.
- ☐ Avoid bending the disc. Do not touch, smudge or scratch its surface.
- ☐ Do not leave the disc in direct sunlight or near a radiator or other source of heat.
- ☐ Always store the disc in its protective case.

ESRB RATING

This product has been rated by the Entertainment Software Rating board. For information about the ESRB rating, or to comment about the appropriateness of the rating, please contact the ESRB at **1-800-771-3772**.

Visit Sega's Internet Sites at:

web site:

<http://www.sega.com>

email:

webmaster@sega.com

CompuServe:

GO SEGA

1-900-200-SEGA



**Learn Sega game secrets
from the masters. Call Now.**

U.S.: 1-900-200-SEGA \$.95/min (recorded), \$1.50/min
(live) Must be 18 or have parental permission.
TTD phone required. Sega of America
Canada: 1-900-451-5252 US \$1.50/min (recorded/live)

For French Instructions, please call:
Instructions en français, téléphoner au: 1-800-872-7342

Bulk Slash

THE CHRONICLE OF GUARDUAL

**Her voice
is your only hope!**

*Bring a beautiful navigator onboard
your transforming vehicle, Guardual,
and save the solar system!*



Table of contents

Using the Sega Saturn.....	2
What Is BULK SLASH?	3
The Story of BULK SLASH	4
Control Pad Layout.....	6
Twin Stick Layout	7
Getting Started	8
Heads-Up Display	10
Items	11
Combat Techniques.....	12
What Is the Partner System?	14
Characters.....	17
Be Immersed in the Drama	23
Credits.....	24

Using the Sega Saturn

1. Set up your Sega Saturn system by following the instructions in the Sega Saturn Instruction Manual. Plug in Control Pad 1. For 2-player games, plug in Control Pad 2 also.

Note: Bulk Slash is for one player.

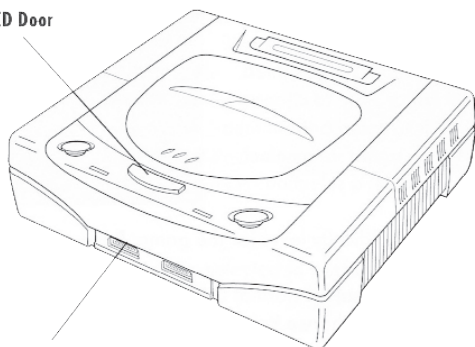
2. Place the Bulk Slash disc, label side up, in the well of the CD tray and close the lid.

3. Turn on the TV or monitor and the Sega Saturn. The Sega Saturn logo will appear on screen. If nothing appears, turn the system off and make sure it is set up correctly before turning it on again.

4. If you wish to stop a game in progress and return to the on-screen Control Panel, simultaneously press Buttons A, B, C and Start on the Sega Saturn Control Pad. When the game Title screen appears, press again to go to the on-screen Control Panel.

Important: Your Sega Saturn compact disc contains a security code that allows the disc to be read. Be sure to keep the disc clean and handle it carefully. If your Sega Saturn system has trouble reading the disc, remove the disc and wipe it carefully, starting from the center of the disc and wiping straight out toward the edge.

Open CD Door



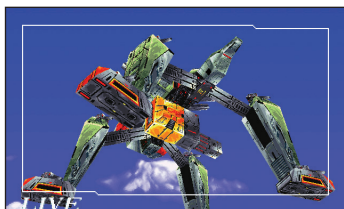
Control Pad 1

What is BULK SLASH?

The player's mission in this game is to clear seven stages and get the passwords to stop the coup d'etat from blowing up the planet.

A 3D Shooting Action Game

Defeat wave after wave of enemies in a sprawling 3D world — that's the name of the game! Players control a transforming mech capable of switching between two modes. Wage exhilarating battles in the city streets in Robot Mode, or take to the skies for white-knuckled dogfights in Plane Mode!



The boss' appearance is exciting, too!

An Unbelievable Number of Enemies

Massive onslaughts of enemies mean you're always in the heat of battle — no time to relax! Transform, traverse, fight and dodge your way through each stage, clearing missions as quickly as possible!



Dazzling Cinematics

Stages are loaded with cinematic special effects — watch searchlights illuminate darkened areas and experience unique climate conditions on each planet, from heavy rain to snow. These may even impact your play tactics.

Partner Navigation System

Seek out the heroic female navigators hidden in each mission and try to beat the game with your favorite partner by your side. A good partner will be essential to traversing the 3D world as efficiently as possible while taking out the enemy. But be warned — these partners start out pretty green. Helping them grow into the role is your second most critical mission.

The Story of BULK SLASH

The Great War played out across three worlds, finally drawing to a close with the fall of the fascist planet Blau. The two victorious planet-states formed a coalition government, executing Blau's top officials as war criminals and dispersing its people across the solar system to prevent the recurrence of a coup. The nightmare seemed over, ushering in a new era of peace.



For the displaced people of Blau, however, the nightmare continued. Despite having equal rights in the eyes of the law, they constantly met all manner of discrimination, from slander to threats to all-out violence. For the people of Blau, the war was far from over.

This harsh and constant discrimination also befell a young girl named Riesen Lavia, who had immigrated to the planet Grün after the execution of her father, a high-ranking Blau official. Riesen's sole salvation was Chris Dooley,



the boy who stood up for her at every turn, and indeed, the only person to whom she could open up or show a smile. She hoped

their wholesome, untinged friendship would last forever.





Twenty-five years after the Great War...

The declaration of a coup d'etat was sudden. Former Blau military chief Alois Gardner consolidated the remnants of his planet's forces to erect a rebel army, and used the "Spät Fest," an apocalyptic weapon capable of destroying entire planets, to take Blau and its approximately 3.2 billion inhabitants hostage.



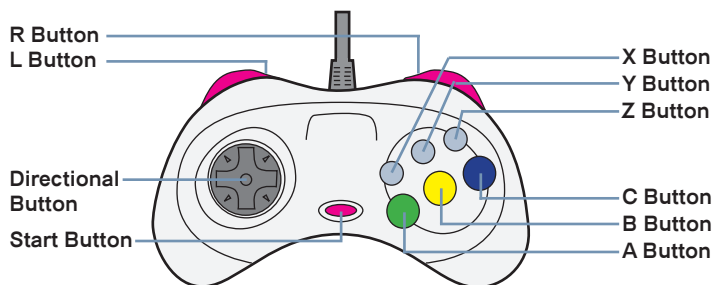
Among those who vowed to serve in the coup was Riesen Lavia, filled with anger over her father's execution and desperate to end her people's suffering.

Wasting no time, the coalition government established an elite task force to avert the detonation of the Spät Fest. Their mission was to thwart the coup by acquiring seven passwords Gardner had hidden inside "Guardian" weapons across the solar system. The operation was dubbed "Bulk Slash."



Appointed to this task force, Chris took to the cockpit with a burning drive to uphold his duty. He was determined to subdue the coup army and pacify their ultimate weapon. Never did he imagine the bittersweet reunion fate had in store...

Control Pad Layout



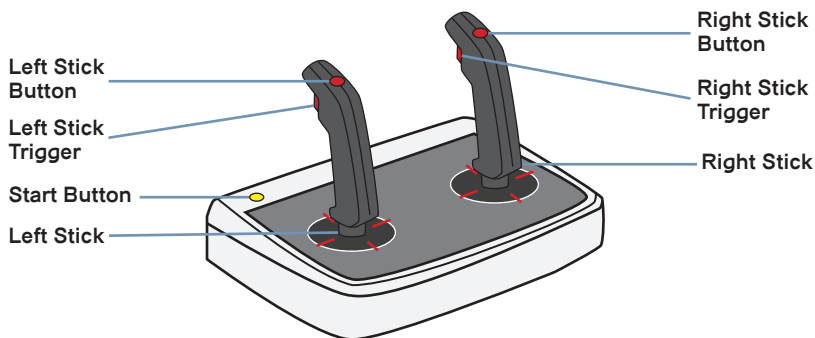
A-Type

	Robot Mode	Plane Mode	In Menus
D-Pad ▲/▼	Move Forward/Back	Pitch Down/Up	Move Cursor
D-Pad ◀/▶	Move Left/Right	Move Left/Right	Move Cursor
L/R Button	Rotate Left/Right	Rotate Left/Right	N/A
A Button	Transform	Transform	N/A
B Button	Attack	Attack	Cancel
C Button	Jump	Toggle Speed	Confirm
X/Y/Z Button	Call M.I.S.S.	Call M.I.S.S.	N/A
Start Button	Pause During Gameplay		Start Game

In addition to the default Type-A layout, you can select Type-B and Type-C button layouts for the Control Pad by going to **OPTION ► CONTROLLER** from the title screen.

You have three types of attack when in Robot Mode (the close-range sword attack, the shot attack and the bomb attack after powering up your meter) and two forms of attack in Plane Mode (the normal shot and the homing missiles after powering up your meter), for a total of five attack types. Your attack meter powers up automatically whenever you don't press the B (attack) button.

Twin Stick Layout



D-Type

	Robot Mode	Plane Mode	In Menus
Left Stick ▲/▼	Move Forward/Back	Pitch Down/Up	Move Cursor
Left Stick ◀/▶	Move Left/Right	Move Left/Right	Move Cursor
Right Stick ◀/▶	Rotate Left/Right	Rotate Left/Right	N/A
Left Trigger	Transform	Transform	N/A
Right Trigger	Attack	Attack	N/A
Right Button	Jump	Toggle Speed	Confirm
Left Button	Call M.I.S.S.	Call M.I.S.S.	N/A
Start Button	Pause During Gameplay		Start Game

The English version of Bulk Slash also supports the Twin Stick controller. For best results when using the Twin Stick controller, go to **OPTION ► CONTROLLER** from the title screen and use the D-Pad to select Type-D.

The rest of this manual assumes you are using the Control Pad with the TYPE-A layout when mentioning buttons.

Getting Started

❶ After placing the Bulk Slash Sega Saturn CD in your Sega Saturn and pressing the power button on, you will be taken to the title screen. Press Start, then highlight START and press the C button to confirm. If you don't press anything on the title screen, the opening cinematic will commence. When the opening cinematic is over, you will return to the title screen.



❷ If you have save data, you will be able to select a navigator from those you have unlocked before beginning the game. If you have multiple save files, be sure to choose which file you want to use beforehand by going to OPTION ► BACKUP SELECT.



❸ If you're playing for the first time, you'll be taken to the Stage Select screen. The only stages selectable from the start are stages 1 to 3. Subsequent stages are only available after clearing stages 1 to 3.



❹ Once you select a stage, you can view that stage's mission objective and tactical map.



⑤ After confirming your mission and pressing the C button, the game will begin.



⑥ During a mission, if your shield drops to zero, you can continue by pressing the Start button within 10 seconds. If you don't press anything, you'll get a Game Over.



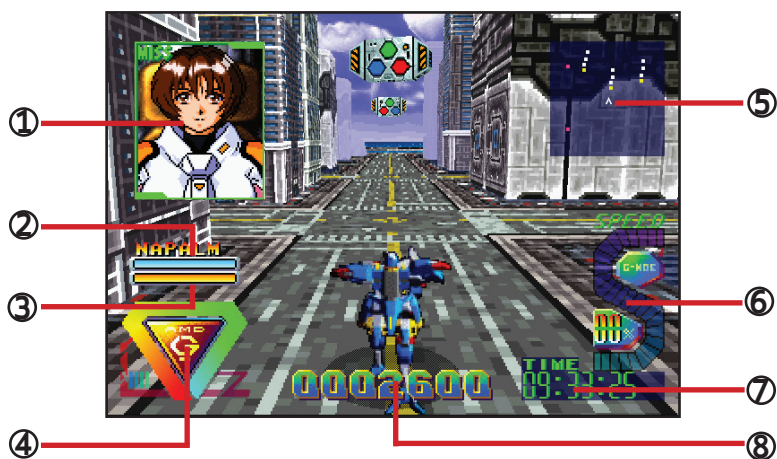
⑦ If you achieve a high score, you'll be able to enter your initials. Your score will be saved automatically.



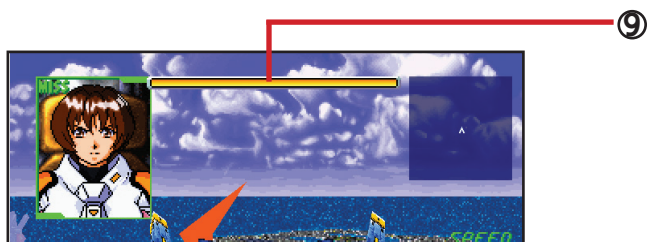
⑧ After pressing Start on the title screen, you can choose OPTION to change the game's difficulty level and key configuration. Use D-pad ▲ and ▼ to highlight the item you want to change, then use A and C to execute the change.



Heads-Up Display



Default Battle HUD



Boss Battle HUD

① Navigator Window

② **Item Gauge:** Displays when you acquire a special weapon; when the gauge depletes to zero, you revert back to your normal attack (Robot Mode only)

③ **Bomb Gauge:** As this gauge fills, you can perform an increasingly strong bomb attack.

④ **Shield Gauge:** Displays

the GuarDual's remaining shield strength.

⑤ Radar

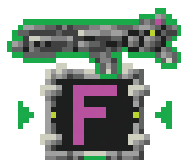
⑥ **Speed Gauge:** Displays your speed when in Plane mode.

⑦ Timer

⑧ **Score:** Displays the number of points you have acquired so far.

⑨ **Boss HP:** Displays the boss's remaining health.

Items



Fire Blaster

Launches powerful flame rounds.



Bézier Blaster

Arcing shot that homes in on enemies.



Napalm Blaster

Fires a three-way shot.



Medal

Increases score by 500 points.



Gold Bars

Increases score by 500 points.



Shield Recovery Lv. 1



Shield Recovery Lv. 2



Shield Recovery MAX

Restores your shield strength. Comes in three levels, from 1 to MAX, with each level restoring a different amount of your shield.



M.I.S.S. Partner Items

Touch one of these items to meet a navigator. If you already have a navigator on board, you'll be asked if you want to switch her out. Choose "Yes" if you do, "No" if you do not.

Combat Techniques

► During boss fights, if you have a navigator aboard the GuardDual, press the X, Y, or Z button to automatically face the enemy.



► When in Plane Mode, pressing the C button allows you to toggle between four speeds. Holding the C button down allows for more minute speed adjustments.



► When in Robot Mode, first hold the B button and then use the D-pad to aim the direction of your attacks.



► Use your bombs or homing missiles to create chain explosions that engulf enemies and obstacles in their blast radius. The larger your chain, the greater your score bonus.



BULK SLASH Strategies

Here are some important points to keep in mind when playing stages 1 and 2. Both of these stages are in cities.

► Always have a navigator with you. Of course, be friendly and take good care of her.

► Listen carefully to the navigator's directions. (The X, Y and Z buttons will prompt the navigator.)



Moving in flight form.

► Move in flight form to save time and head straight for the target.

► Destroy targets from a distance to reduce the damage you take.



Keep a little distance from the target.



Don't just fire wildly — think before you shoot!

► Targets can be found on top of buildings or in the enemy's territory, so look carefully.

► In boss battles, slow down and don't attack unnecessarily — build up your gauge and fire missiles.

If you follow these six points, you'll clear each mission with ease!



The Partner System

*We fight together, we suffer together and we share in the glory.
That's what partners are for...*

There's more to BULK SLASH than just shooting things. The heroic female partners riding beside you add a whole new layer to the fun. Each one is part of the coalition government's M.I.S.S. program — the Manageable Intelligent Support System.

Stage 1

To stop the planet Blau's imminent annihilation, Chris must destroy the walking assault craft at the end of the stage to obtain a password. Staff Sergeant Leone Rhodes is already waiting near the stage entrance to help Chris.

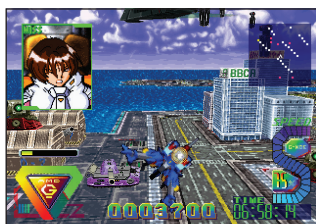


When you touch the icon marked "M.I.S.S.," your partner for Stage 1, Leone, will appear. If you choose to bring her aboard, she will ride alongside Chris in the GuarDual, offering various forms of support.



The main role of the partner is to provide navigation support, telling you the locations of targets in real time. Partners will also offer words of encouragement along the way.

If the GuarDual takes damage, so, too, will your partner. Try as she may to maintain her composure, a particularly nasty hit may cause her to shriek in pain, so take care!



A little advice

The conditions for leveling up vary from one navigator to the next. Your romantic affinity may rise by achieving chain combos or collecting lots of items. These parameters are hidden, so be sure to try various approaches.

There are six (or is it seven?) possible partners in the game, including Leone — one hidden in each stage. You are free to choose whether or not to swap out partners as you find each one. Find your favorite and stick with her!



If you can stick it out through the final battle, a happy ending awaits!

What to do after clearing the game

After clearing all stages, you may be treated to a unique ending for the navigator accompanying you. That's not all — you also get to view one of three “visual bonuses,” depending on your romantic affinity level with that navigator.

Whichever navigator is with you when you clear the game will maintain her level progress, so you might try taking her out again to further level her up. Any visual bonus you have viewed will be saved to your file automatically and can be viewed again in the OPTIONS menu.





Characters

The characters in BULK SLASH include the hero (the player character) and the heroine, as well as six — or seven? — navigation partners.



Chris Dooley

Age: 19

Gender: Male

Voice actor: Takehito

Koyasu (Japanese),

Jonathan Boncher (English)

In reverence to his father, a military mechanic, Chris enlisted in hopes of “trying out Dad’s craftsmanship firsthand.” Though hardly the best pilot in the solar system, he embarks upon his mission boldly and with a deep-seated righteousness.



Riesen Lavia

Age: 19

Gender: Female

Voice actor: Yuri Amano

(Japanese),

Luuzine (English)



Following her father’s execution as a war criminal, Riesen joins the coup d’etat army led by her father’s old friend, Gardner. Riesen’s cold, emotionless visage is a mask to protect her from the discrimination she endures; in truth, she is as kind and gentle as they come.

Meet the Navigators

These seven young women serve as your partners, their voices informing you of enemy and target locations. Each navigator has her own unique way of supporting you. But be warned — at low levels, their navigation may leave something to be desired.

Leone Rhodes



Age: 16
Gender: Female
Birthday: July 4
Occupation: S.D.F.
Home Planet: Grün
Voice actor: Miki
Nagasawa (Japanese),
Edobean (English)



Born into a military family spanning generations of service, Leone is an elite soldier with a promising future. Popular among her peers, she is a reliable navigator despite her youth.



Metical Flair



Age: 16

Gender: Female

Birthday: March 3

Occupation: Princess

Home Planet: Braun

Voice actor: Michiko Neya
(Japanese), Dark Mysty
(English)



Eldest daughter to the royal family of planet Grün. Whether a result of her upbringing or an innate personality trait, she is the epitome of conceit in both word and action.

Lira Hart



Age: 18

Gender: Female

Birthday: Oct. 1

Occupation: Idol

Home Planet: Gold

Voice actor: Kyoko Hikami
(Japanese), Erin Lefe (English)



Became a pop star as an act of rebellion against her parents, who only showed affection to her brother. Because she is not a soldier, her ability as a navigator is rather shaky.

Naira Savage



Age: 22

Gender: Female

Birthday: Feb. 6

Occupation: S.D.F.

Home Planet: Schwarz

Voice actor: Ai Orikasa

(Japanese),

Raycher (English)



Chris's superior officer. Though skilled enough to put her male peers to shame and execute even the most demanding tasks with ease, Naira has a fixation with baths and spends nearly half her time in the tub.

Rupia Rude

Age: 20

Gender: Female

Birthday: Oct. 6

Occupation: Thief

Home Planet: Rot

Voice actor: Naoko

Matsui (Japanese),

Diana Allocco (English)



Rupia's cool manner belies an extremely cautious personality. Descended from a long line of thieves, she believes thievery is the most sensible vocation one can occupy.

Colón Steiner



Age: 19

Gender: Female

Birthday: April 1

Occupation: S.D.F.

Home Planet: Weiss

Voice actor: Yuko

Mizutani (Japanese),

Saskia (English/Spanish/German)

Has experience beyond her years and a knack for wit, but when she remembers her painful past she often falls into a depression.



Mystery Girl



Age: Unknown

Gender: Female

Birthday: Unknown

Occupation: Unknown

Home Planet: Unknown

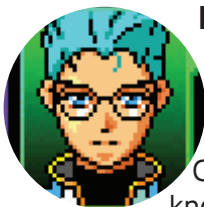
Voice actor: Satomi Korogi (Japanese),

CrouchingMouse (English)

Possesses superior navigational ability to all other navigators. Because of her horrendously tragic childhood, she occasionally exhibits strange behavior.

Other Characters

The world of BULK SLASH is full of characters, both friend or foe. These are some of the people who are most relevant to your mission.



Michio Tachikawa

A member of the S.D.F.'s support staff. Michio and Chris Dooley are friends outside the cockpit, but when they're on duty, he briefs Chris on his upcoming mission objectives. He knows that there's a history between Chris and Riesen Lavia.

Alois Gardner

The mastermind behind the rebel uprising against the solar system's ruling governments. Gardner, with his right-hand man Gehalt, is looking for revenge after his planet, Blau, lost the Great War years earlier. He threatens the people who now live on Blau with a superweapon called the Spät Fest.



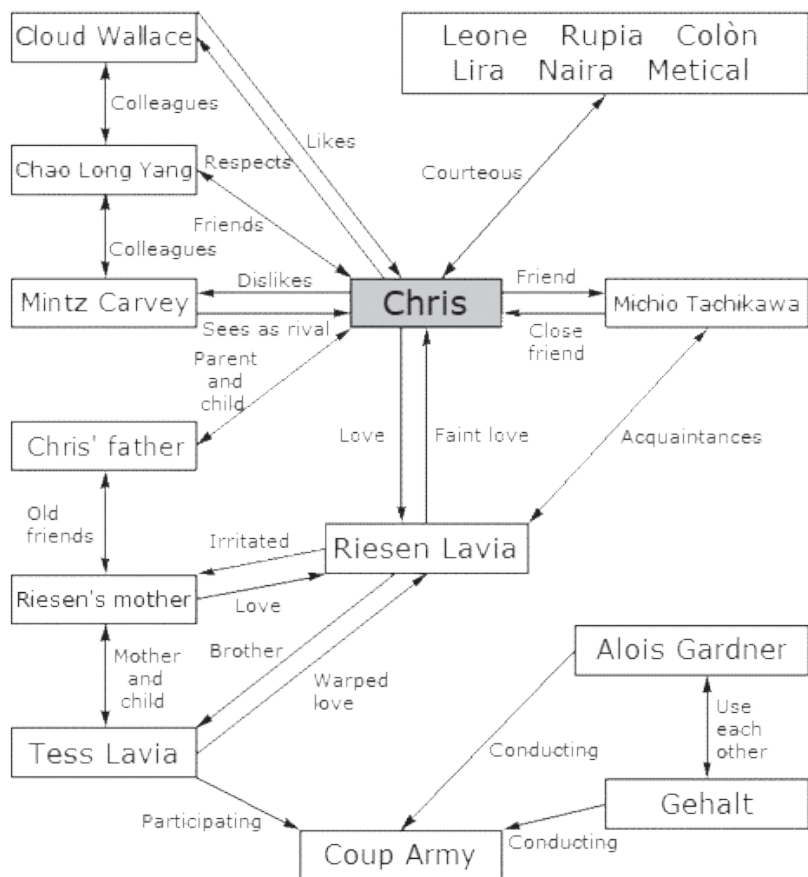
King Flair

The sovereign leader of the Kingdom of Braun. If Gardner decides the king is a threat, Flair will be forced to flee his planet, and he'll need S.D.F. escorts to help. He feels very protective over his teenage daughter, Metical.

Be Immersed in the Drama

This game is actually very deep! It has a proper a storyline!
That's why it's important to complete missions!

Below is a diagram of the human relationships surrounding the main character, Chris Dooley:



If you play with this relationship diagram in mind, the ending of Bulk Slash will be a moving experience.

Chris may be liked by all his navigators, not just Riesen, but there's something fishy going on with the heroine.

Credits

ENGLISH LOCALIZATION

Project Lead, Translator,

Voice Director

Greg Moore

Script Editors

Dan "Danthrax" Myers

Chanh "Burntends" Nguyen

Chris "Ghaleon Unlimited" Hatala

Code Insertion, Video Editor

Mamdouh "Mampfus" Maduar

Graphics and Font Editor,

Tile Setter, Manual Layout

Dan "Danthrax" Myers

Talent Scout,

Community Manager

Chanh "Burntends" Nguyen

Reverse Engineer, Developer

Anthony "KnightOfDragon" Randazzo

Recreated Musical Score

Jiggle85 and his brother

Shadowmask

Recreated Sound Effects

Shadowmask

Audio Engineers

Mamdouh "Mampfus" Maduar

Shadowmask

Greg Moore

Edited Bulk Slash Logo

SaturnDave

Original Manual Scan

Chris "Ghaleon Unlimited" Hatala

ENGLISH CAST

Chris Dooley

Jonathan Boncher

Riesen Lavia

Luuzine

Leone Rhodes, Bully #2

Edobean

Lira Hart

Erin Lefe

Metical Flair

Dark Mysty

Naira Savage

Raycher

Rupia Rude

Diana Allocco

Colón Steiner

Saskia

Kina Dibiase

CrouchingMouse

Narrator

Nick "PandaMonium" Broadway

Protecting Boy, Mana

CrouchingMouse

Bully #1

Eugene

Adult Kina, Computer

Cargodin

Reporter

Sara Biebuyck

King Flair

Ucial

Lira Fans

Danthrax, Mampfus, Burntends,

Greg Moore

Motor Show Men

SaturnDave

Patrick "TraynoCo" Traynor

SPECIAL THANKS

TrekkiesUnite118

Malenko

Kris Taquka'angcuk Knigge

Thorsten Roth

Connor

Bofner

The localization team's families

Shiro Media Group

SegaXtreme forum

The original Bulk Slash dev team

LIMITED WARRANTY

Sega of America Inc., warrants to the original consumer purchaser that the Sega Saturn CD-ROM shall be free from defects in material and workmanship for a period of 90 days from the date of purchase. If a defect covered by this limited warranty occurs during this 90-day warranty period, Sega will repair or replace the defective CD-ROM or component part, at its option, free of charge. This limited warranty does not apply if the defects have been caused by negligence, accident, unreasonable use, improper handling, modification, tampering or any other causes not related to defective material or workmanship.

WARRANTY REPAIRS

IF YOUR SEGA SATURN COMPACT DISC IS DEFECTIVE OR HAS BEEN DAMAGED, DO NOT RETURN IT TO YOUR RETAIL SELLER. Sega of America cannot offer credit or exchanges for merchandise purchased through your retail store.

To receive U.S. warranty service, call the Sega Consumer Service Department at:

1-800-USA-SEGA

To receive Canadian warranty service, call the Sega Canadian Consumer Service Department at:

1-800-872-7342

Please contact the Sega Consumer Service Department for information. If the Sega technician is unable to solve the problem by phone, he or she will provide you with instructions on returning your defective disc to Sega. The cost of returning the disc to Sega's Service Center shall be paid by the purchaser.

OUT OF WARRANTY REPAIRS AND REPAIRS AFTER EXPIRATION OF WARRANTY

After termination of the 90-day limited warranty period, you may contact the Sega Consumer Service Department at the number listed above. If the technician is unable to solve the problem by phone, he or she will advise you of the estimated cost of replacement. If you elect to have your CD-ROM replaced, send a check or money order payable to Sega of America Inc., for the amount of the cost of the product provided to you by the technician.

LIMITATIONS ON WARRANTY

Any applicable implied warranties, including warranties of merchant-ability and fitness for a particular purpose, are hereby limited to 90 days from the date of purchase and are subject to the conditions set forth herein. In the event shall Sega of America Inc., be liable for consequential or incidental damages resulting from the breach of any express or implied warranties. The provisions of this limited warranty are valid in the United States only. Some states do not allow limitations on how long an implied warranty lasts, or exclusion of consequential or incidental damages, so the above limitation or exclusion may not apply to you. This warranty provided you with specific legal rights. You may have other rights which vary from state to state.

For service needs, call Sega at:

1-800-USA-SEGA

For French instructions, please call

Instructions en français, téléphoner au: **1-800-872-7342**

ESRB RATING

This product has been rated by the Entertainment Software Rating board. For information about the ESRB rating, or to comment about the appropriateness of the rating, please contact the ESRB at **1-800-771-3772**.



"Sega is committed to helping prepare the next generation for the world they will create. Since 1992, the Sega Foundation has invested more than \$7.7 million to ensure access to quality education and health for American youth."

SURVIVE THE STREETS OF NEO CITY...



DEATHMASK

DE-TRANSLATION PROJECT



SHED
MEDIA GROUP

WINTER 2021

ELECTRIC DREAMS INC.